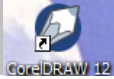


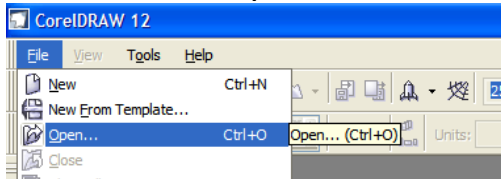
VERSALASER- CUTTING GRAPHICS WITH CORELDRAW

Follow the steps below to cut graphics using CoreDraw.

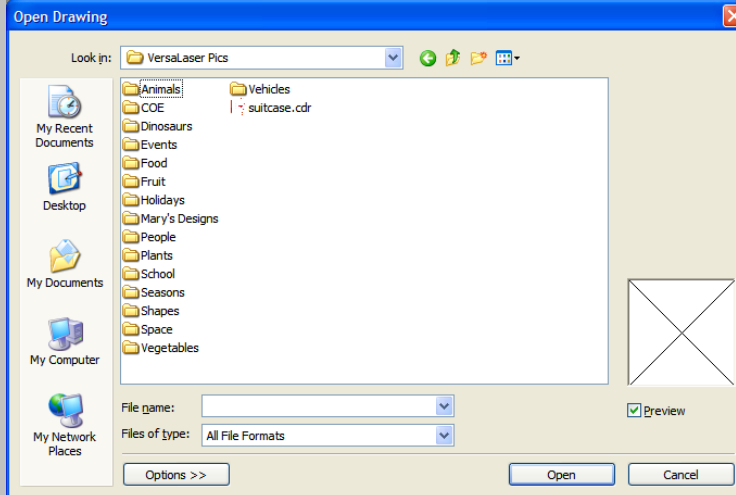
STEP 1: Open CoreDRAW.



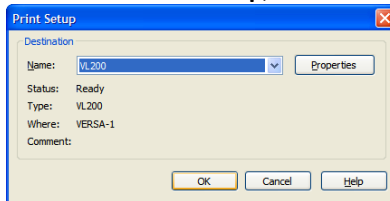
STEP 2: Click **File** and choose **Open**.



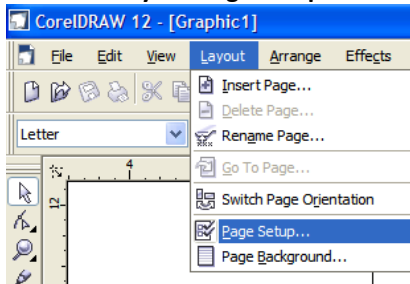
STEP 3: In the popup window, click on the **Desktop** and open the **VersaLaser Pics** folder. Locate the file to print and click **Open**.



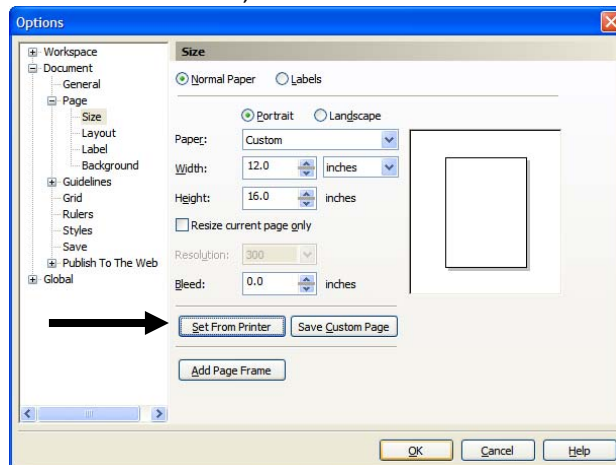
STEP 4: The page should be setup for a 12" X 16" paper (do not change this), although the paper available to print on is either 12" X 12" or 8 1/2" X 11". If the paper is not setup to be 12" X 16," Click on **File-Print Setup**, choose **VL200**, and click **OK**.



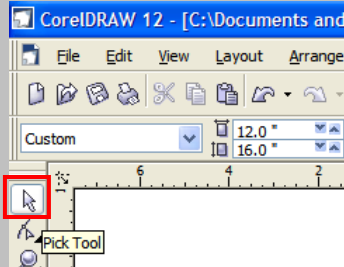
Then click **Layout-Page Setup**.



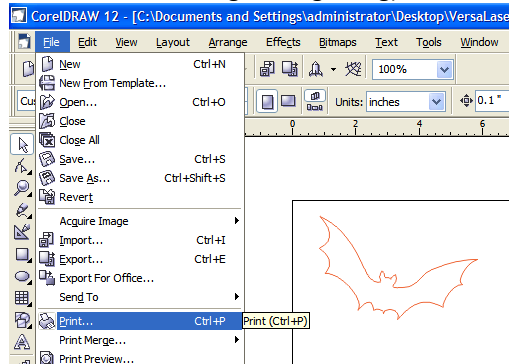
Click **Set From Printer**, and then click **OK**.



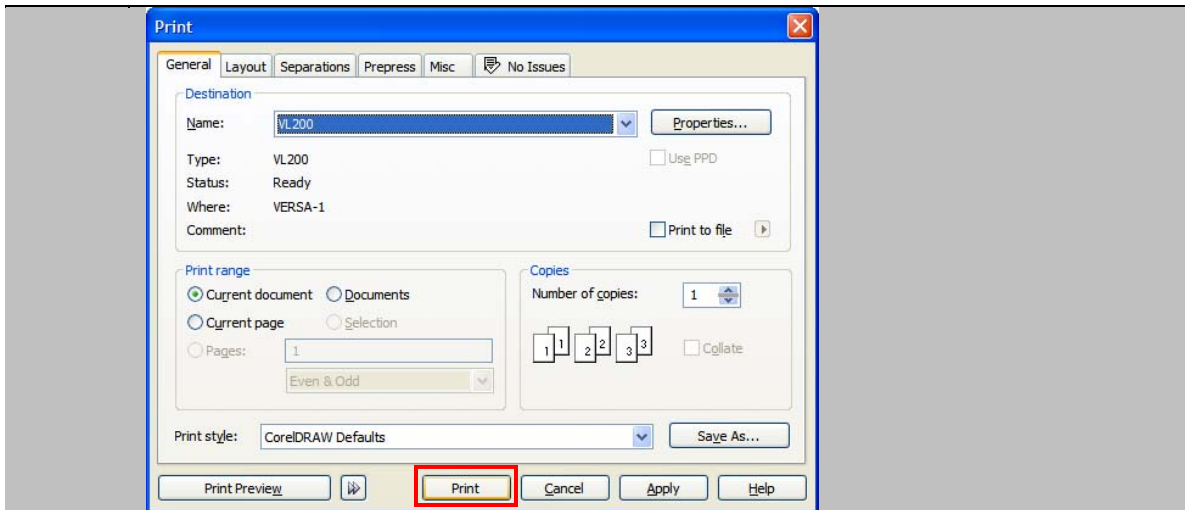
STEP 5: Use the **Pick Tool** to resize the image by dragging from the corner squares around the image. Move as desired. (1/4 page=small, 1/2 page=medium, 1 page=large)



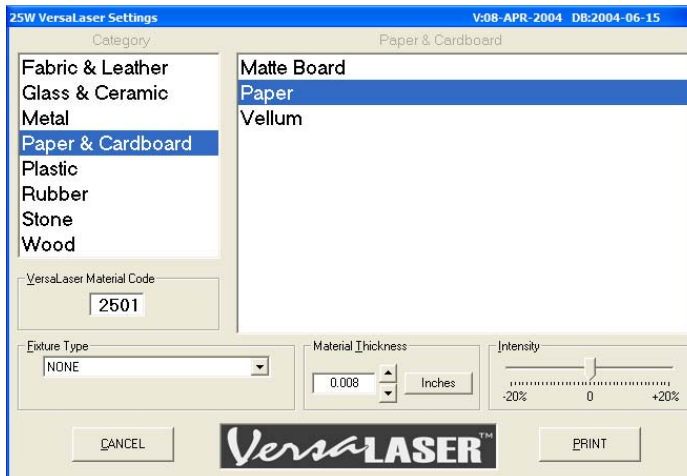
STEP 6: To cut the image(s) out, click on **File- Print**. (The images must be a red line drawing for cutting or a blue line drawing for engraving).



STEP 7: In the popup window, choose the printer named **VL200** and click **Print**.



STEP 8: Choose the material type and enter the material thickness. (**To measure material thickness, use the tool in cabinet 6...set it to zero while closed and then open it and “bite” the material with it). (Cardstock= .008, construction paper= .005, plain print paper= .004). Click **Print**.



STEP 9: Make sure that a 2” strip of paper is flush with the leftmost side of the VersaLaser honeycomb tray. Place the material to be cut on the top-left most corner of the tray, next to the 2” strip, and close the lid.



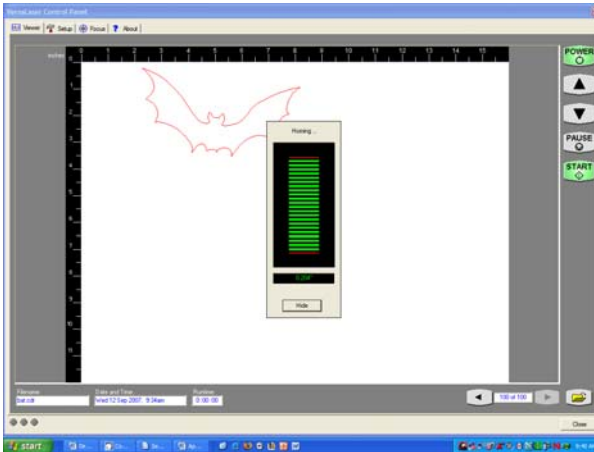
STEP 10: Make sure the VersaLaser’s USB cable is plugged into the computer.



STEP 11: In the bottom right-hand corner of the screen, click on the **VersaLaser Control Panel** icon.



STEP 12: Click **Power** to start the VersaLaser. After it finishes homing, click on **Start**.



STEP 13: Upon completion, the cutter will return to its resting position. Click **Power** to turn it off.



STEP 14: Remove both the cutout material and leftovers from the tray and unplug the VersaLaser USB cable from the computer.